

Wall Mount Digital PIR Detector LX-PIR-W140-24

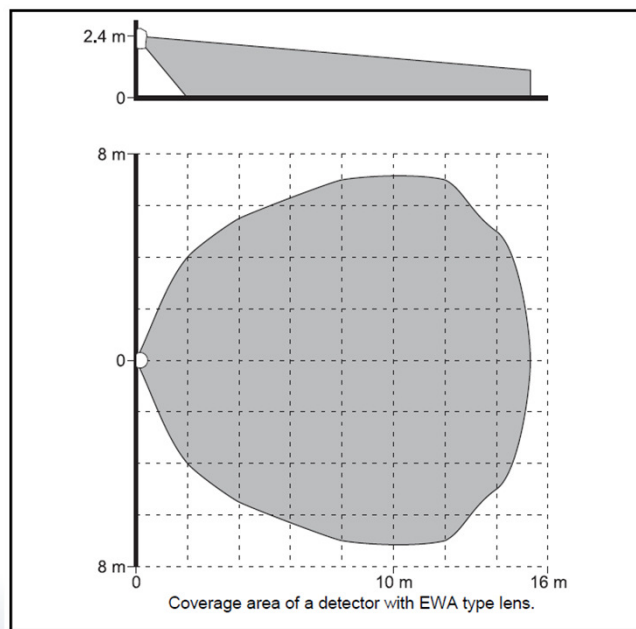
LX-PIR-W90-24 is a digital passive infrared detector equipped with a dual element PIR sensor. Owing to the use of digital motion detection algorithm it is characterized by good immunity to interference and false alarms. Interchangeable Fresnel lens and three-step sensitivity control make it possible to adjust the device performance to requirements of the user and the protected premises. The detector has a built-in pre-alarm feature and tamper switch to protect it against opening the enclosure. Because the detector can be powered from a 24 V DC or AC source, it is intended for systems running on 24 V.

The main task of the detector is to detect violations in the protected area. However, it can also be used to implement the building automation functions. When the alarm system is not armed, the detector can control turning on the lights, opening or closing the doors, etc.

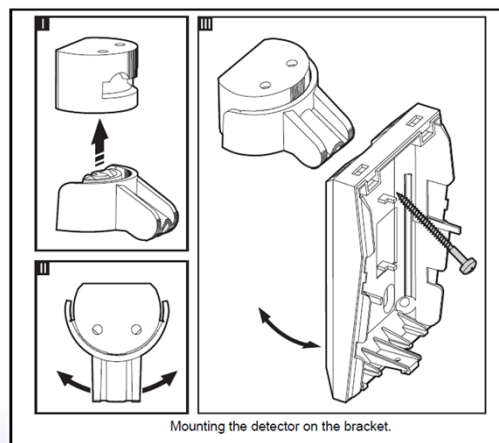
- Fully digital detection
- replaceable Fresnel lens with sealed optics
- Digital temperature compensation
- Pre-alarm feature
- Powered by 24 V AC/DC
- adjustable mounting bracket included



Coverage area



Mounting Details



Order codes

LX-PIR-W140-24

Technical Data

Operating Voltage:	24 V AC/DC
Current Consumption:	27 mA for 24 V AC (0.65W) 14 mA for 24 V DC (0.37W)
Signaling time:	2 sec
Pyro sensor:	Dual element
Installation height:	2.4m
Environmental class according to EN50130-5:	II
Detectable Speed:	0.3 ~ 3 m/s
Dimensions:	63 x 96 x 49 mm
Weight:	93 g
Operating Temperature:	-30 - +55 °C
Humidity:	93% RH Maximum